

N.C. Cities and Towns: 25-Year Transportation Vision

House Select Committee on Strategic Transportation
Planning and Long Term Funding Solutions
Monday, March 7, 2016

Erin Wynia, Legislative Counsel
N.C. League of Municipalities



Agenda

- NCLM Background
- Transportation Vision
- Transportation Priorities
- Questions & Discussion



NCLM Background



More than a century of serving
cities and towns

Cities' & Towns' 2030 Vision

Worked with the UNC School of Government through a year-long process to set a vision for cities and towns for 2030 and beyond



Cities' & Towns' 2030 Vision

Transparent, inclusive process that included elected officials, municipal staff, legislators, county officials and others



Cities' & Towns' 2030 Vision

Two relevant principles:

1. Urban, rural cooperation
2. Adapt to culture, demographic changes



League Poll

- Conducted October 25-27
- McLaughlin & Associates
- 600 likely general election voters in North Carolina
- 70% landline/30% cell phone
- Margin of error +/- 4 percent



League Poll

Demographics

	Total		Total		Total
Likely Voter:		Race:		Media Market:	
Very	93	White	71	Raleigh	31
Somewhat	7	Non-White	28	Charlotte	27
Party:		African-American	22	Greensboro	18
Republican	31	Age:		Wilmington	5
Democratic	41	Under 40	35	East	11
Independent	23	41-55	21	West	8
Ideology:		56-65	24	City Size:	
Liberal	23	Over 65	20	Small	38
Moderate	33	Mean	49yr	Medium	29
Conservative	40	Area:		Large	33
Gender:		City	28	Interview:	
Men	46	Suburb	14	Landline	70
Women	54	Rural	57	Cell Phone	30

League Poll

Most Important Priority

	1st Choice	2nd Choice	Combo	Small Cities	Medium Cities	Large Cities
Economic/Jobs	45	19	64	60	67	65
Public Safety	21	25	46	46	47	45
Roads/Sidewalks	12	16	28	27	24	30
Water/Sewer	7	11	18	21	15	17
Parks/Recreation	6	12	18	12	21	20
Public Buildings	3	7	10	8	10	11
Street Lights	2	3	5	8	5	4
Trash/Refuse	2	3	6	7	6	3
Don't Know	3	3	--	--	--	--

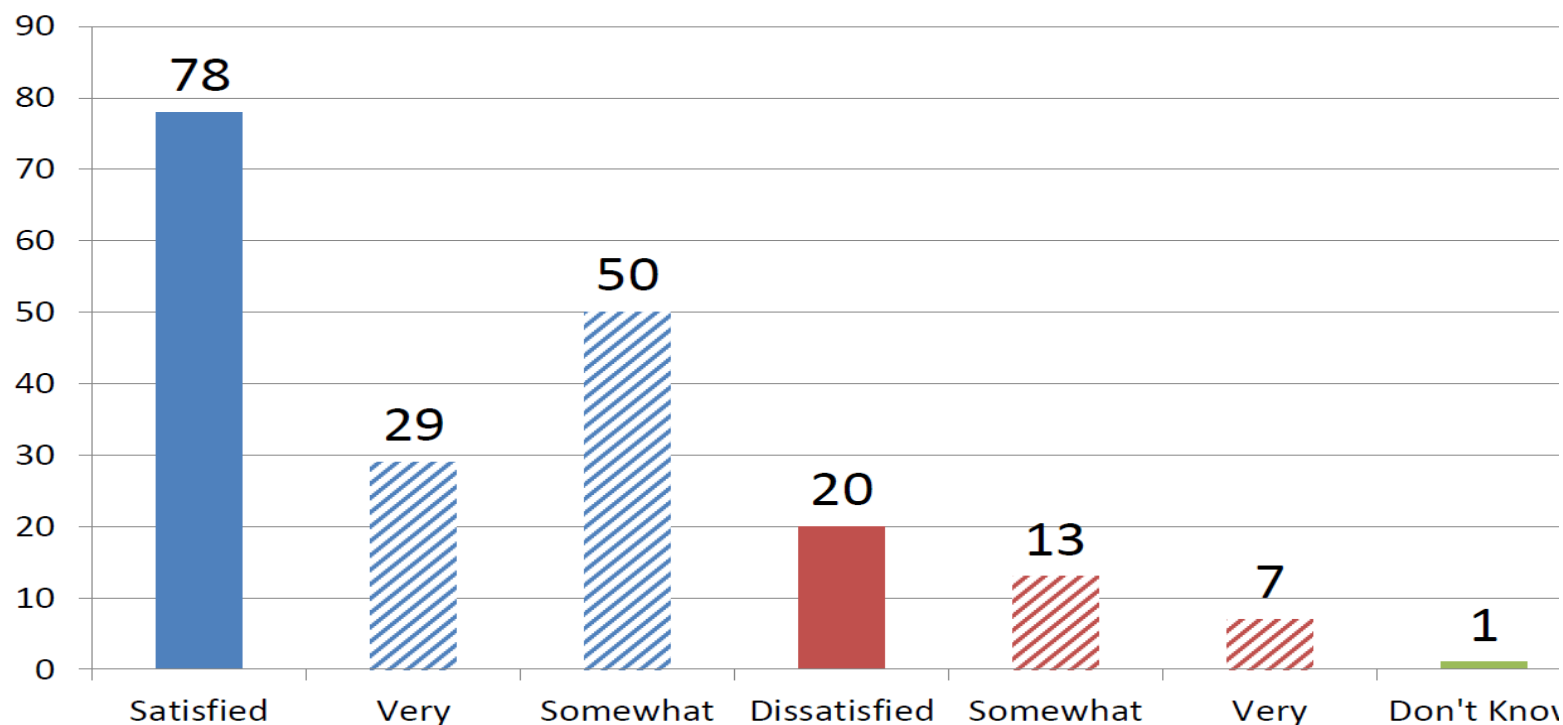
League Poll

Priority to Improve Economy & Jobs

	1st Choice	2nd Choice	Combo	Small Cities	Medium Cities	Large Cities
Small Businesses	44	23	67	64	69	68
Infrastructure	15	21	36	35	34	40
Market/Promote	14	18	32	39	35	21
Safer/Cleaner	13	15	28	25	25	34
Services/Amenity	8	15	23	21	24	24
Don't Know	5	4	--	--	--	--

League Poll

City or Town Services & Amenities



A Shared Local-State Vision

- Cities & towns share the same goals as NCGA and want to be partners toward creating economically successful communities
- Citizens and elected officials alike agree that a robust transportation system is a top priority of government at both levels



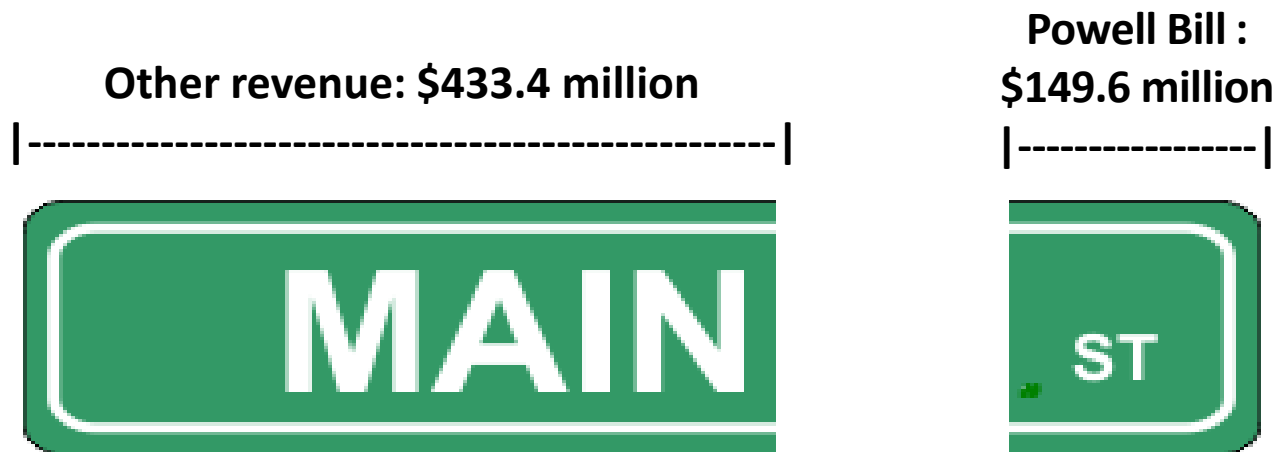
A Shared Local-State Responsibility

- THANK YOU for stabilizing and increasing transportation funding
- THANK YOU for increasing project delivery options like PPPs, design-build



A Shared Local-State Responsibility

- In FY 13-14, municipalities paid for...
 - 25% of transportation expenditures with Powell Bill
 - 75% with other revenue sources

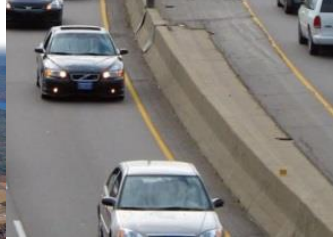


A Shared Local-State Responsibility

- Municipal authority to fund transportation
 - Property tax
 - Vehicle tax
 - Debt
- Supplemental sources NOT controlled by municipality
 - Powell Bill: ~25% of municipal transportation funding in FY 13-14
 - Local sales tax: only 36% of taxes generated in a city are returned to the city



N.C. Cities' & Towns' 25-Year Transportation Vision



Economic Development

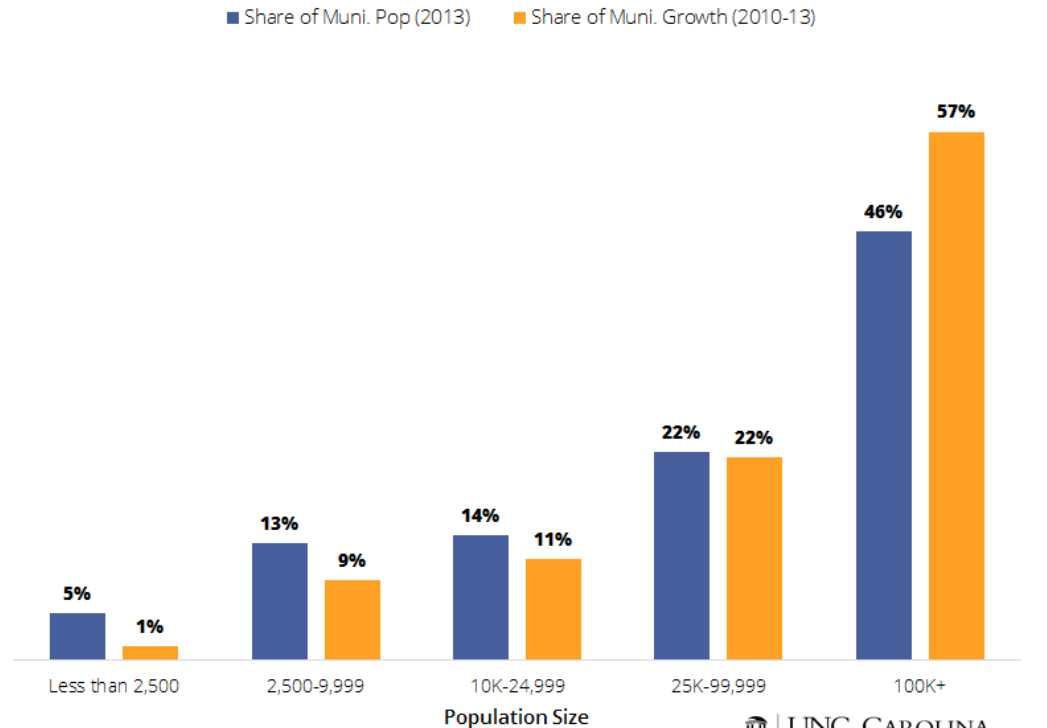
- Investments in the state's transportation system are tied to economic development strategies
- Municipalities...
 - Contain 80% of North Carolina's jobs
 - Generate 75% of North Carolina's retail activity
 - Keep property taxes low



Demographics

- The state's transportation network evolved to accommodate demographic shifts

Share of NC Municipal Population & Population Growth by Municipality Size, 2010-2013

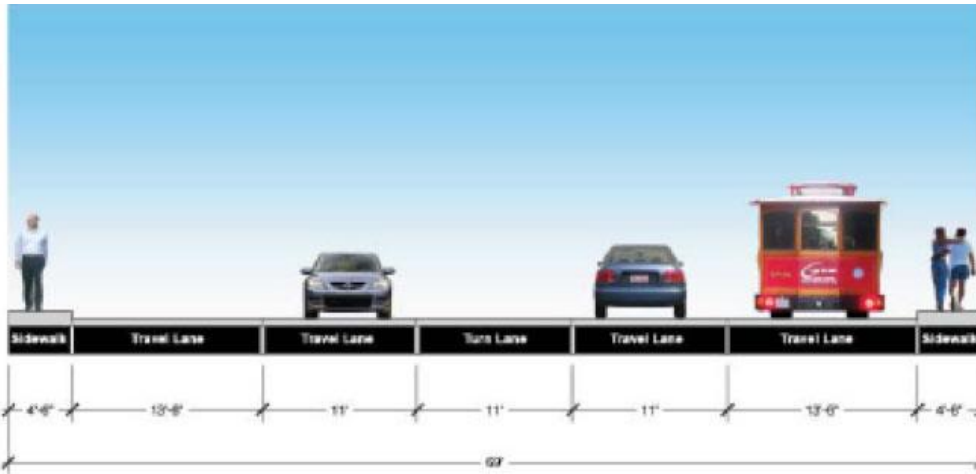


Data Source: NC OSBM

UNC CAROLINA
POPULATION
CENTER
DEMOGRAPHY

Move People

- The state's transportation network moves people into regional job centers as well as *within* those job centers



Move Goods

- The state's transportation network moves goods into and out of regional job centers



Implementing the Vision: 25-Year Transportation Priorities



25-Year Transportation Priority #1

- Integrate transportation improvements with local economic development strategies



25-Year Transportation Priority #2

- Diversify funding sources



25-Year Transportation Priority #3

- Maintain/upgrade existing facilities



25-Year Transportation Priority #4

- Build out the state's alternate transportation system



25-Year Transportation Priority #5

- Account for regional variations in transportation needs



Questions / Discussion

Erin Wynia

Legislative Counsel

ewynia@nclm.org

O: 919-715-4126

M: 919-961-6108

